

10 Assembling Antennas

About This Chapter

Before installing an antenna on a tower, you need to assemble the antenna. The antenna to be assembled can be an omnidirectional antenna or a directional antenna.

[10.1 Assembling Omnidirectional Antennas](#)

This part describes how to assemble the omnidirectional antenna before the antenna installation.

[10.2 Assembling Directional Antennas](#)

This part describes how to assemble the directional antenna accessories before the antenna installation.

10.1 Assembling Omnidirectional Antennas

This part describes how to assemble the omnidirectional antenna before the antenna installation.

Prerequisite

The omnidirectional antenna accessories and jumper are ready.

Context

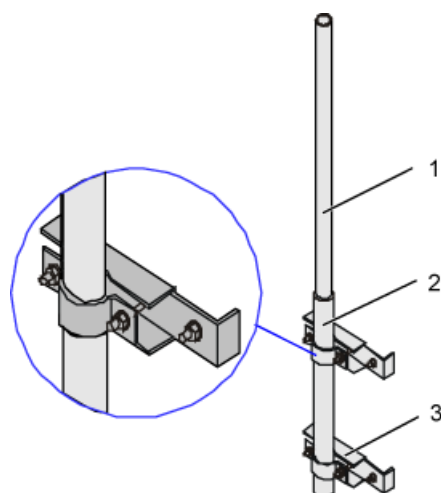
NOTE

The method of installing a fixing clip for the omnidirectional antenna varies according to the type of fixing clip. You should determine the installation method according to the actual conditions. The following part describes how to use the fixing clip to install the omnidirectional antenna, as shown in [Figure 2](#).

Procedure

Step 1 Assemble two fixing clips for the omnidirectional antenna, as shown in [Figure 10-1](#).

Figure 10-1 Assembling fixing clips for the omnidirectional antenna



(1) Omnidirectional antenna (2) Antenna jacket (3) Fixing clip for the omnidirectional antenna

Step 2 Connect the jumper connector to the antenna connector, and then tighten them.

Step 3 Waterproof the joints between the antenna and the feeder by referring to [18 Labeling the Antenna System](#).

NOTE

You can also perform the operations in [Step 2](#) on a tower.

----End

10.2 Assembling Directional Antennas

This part describes how to assemble the directional antenna accessories before the antenna installation.

Prerequisite

The directional antenna accessories and jumper are kept ready.

Context



NOTE

The installation methods of fixing clips for the directional antenna vary according to the fixing clip types. You should determine the installation method according to the actual conditions. The following part describes how to use the fixing clip to install the directional antenna, as shown in [Figure 5](#).

Procedure

Step 1 Determine the two adjustment points at the bottom of and on the top of the antenna according to the labels at the back of the antenna.



NOTE

The adjustment point on the top is used to adjust the pitch angle adjuster. The adjustment point at the bottom is used to fix the antenna and support.

Step 2 Install the accessories according to the accessory assembly designs provided by the supplier.

Step 3 Connect the jumper connector to the antenna connector, and then tighten them.

Step 4 Waterproof the joints between the antenna and the feeder by referring to [18 Labeling the Antenna System](#).

----End